

项目 Mdxp	变更内容 Modification	日期 Date	修改人 Draw	批准 Approve

规格说明: Specifications:

电气特性: Electrical:

- 额定电流: Current Rating
1.5A/contact terminal
- 额定电压: Voltage Rating
30V DC
- 接触阻抗: Contact Resistance
30 milliohms MAX
- 耐压: Dielectric Withstanding Voltage:
500 V AC AT Sea Level
- 绝缘阻抗: Insulation Resistance:
1000MEGA ohms MIN

物理性能: Mechanical:

- 插拔力: Connector Mate and Unmate Force
Mate force: 3.57kgf(MAX)
Unmate force: 1.02kgf(MIN)

原材料: Material:

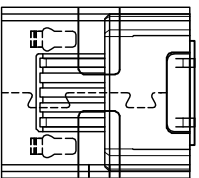
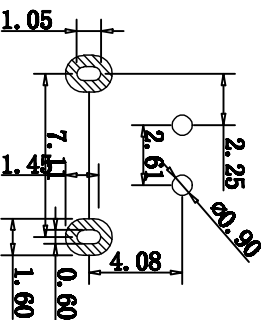
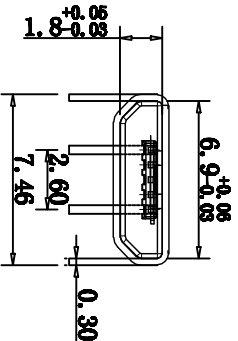
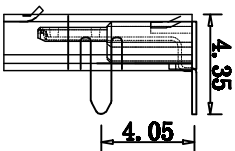
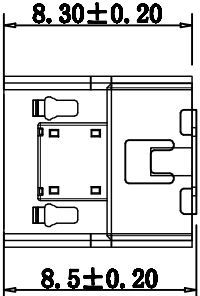
- 塑壳: Housing:
Hing Temperature Thermoplastics,

- 端子: Contact: Copper Alloy C1591
- 外壳: Shell: Copper Alloy C2680/SPCC

电镀: Finish:

- 端子: Contact: Plated Gold in Mating Area
Tin On Solder Talls
- 外壳: Shell:
端子四周镀50U"(MIN)镍,镀金区域镀100-200U"镀金1U"
铜壳四周镀80U"(MIN)镍

Nickel Plating



成品图 MANUFACTURE DWG		公差 TOLERANCE UNLESS OTHERWISE		日期 DATE		单位 UNIT		制图 DRAWING		DWG NO.	
X±0.20	X±5°	X±0.10	X±2°	2016.10.20	MM	1:1	SCALE	LUFU	姓名 NAME	MICRO 2P 90度	版本 VER
XXX±0.02	.XX±1°	按标准 APPROVE	按标准 APPROVE	角法 VIEW	角法 VIEW	角法 VIEW	角法 VIEW	角法 VIEW	角法 VIEW	角法 VIEW	角法 VIEW